

STRADA-IP-24-T3-M-PC

IESNA Type III (medium) beam with excellent backlight control, illuminance uniformity and cutoff. Variant made from PC.

SPECIFICATION:

Dimensions	173.0 x 71.4
Height	9 mm
Fastening	pin, screw
Ingress protection classes	IP66, IP67
ROHS compliant	yes ⓘ

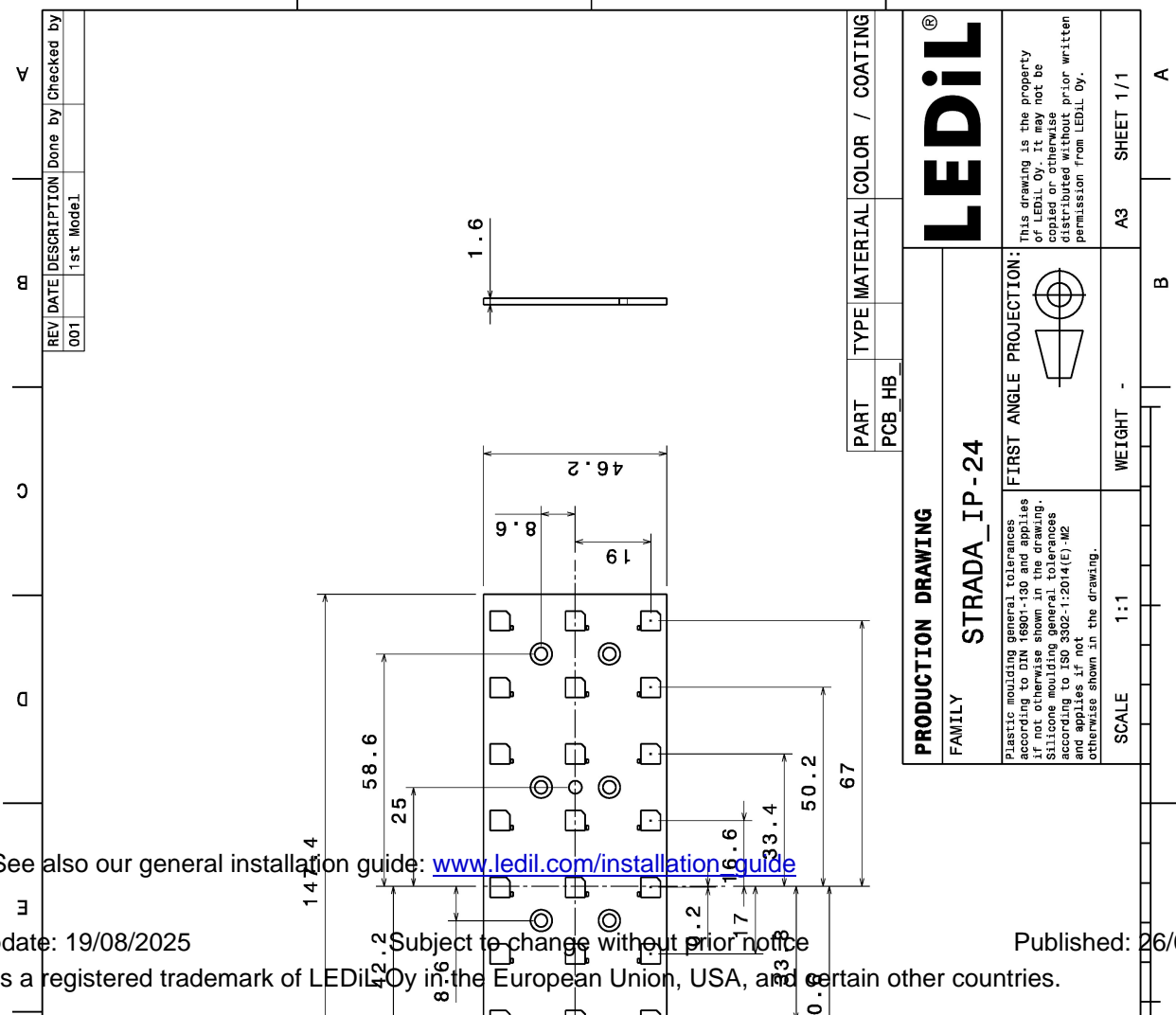
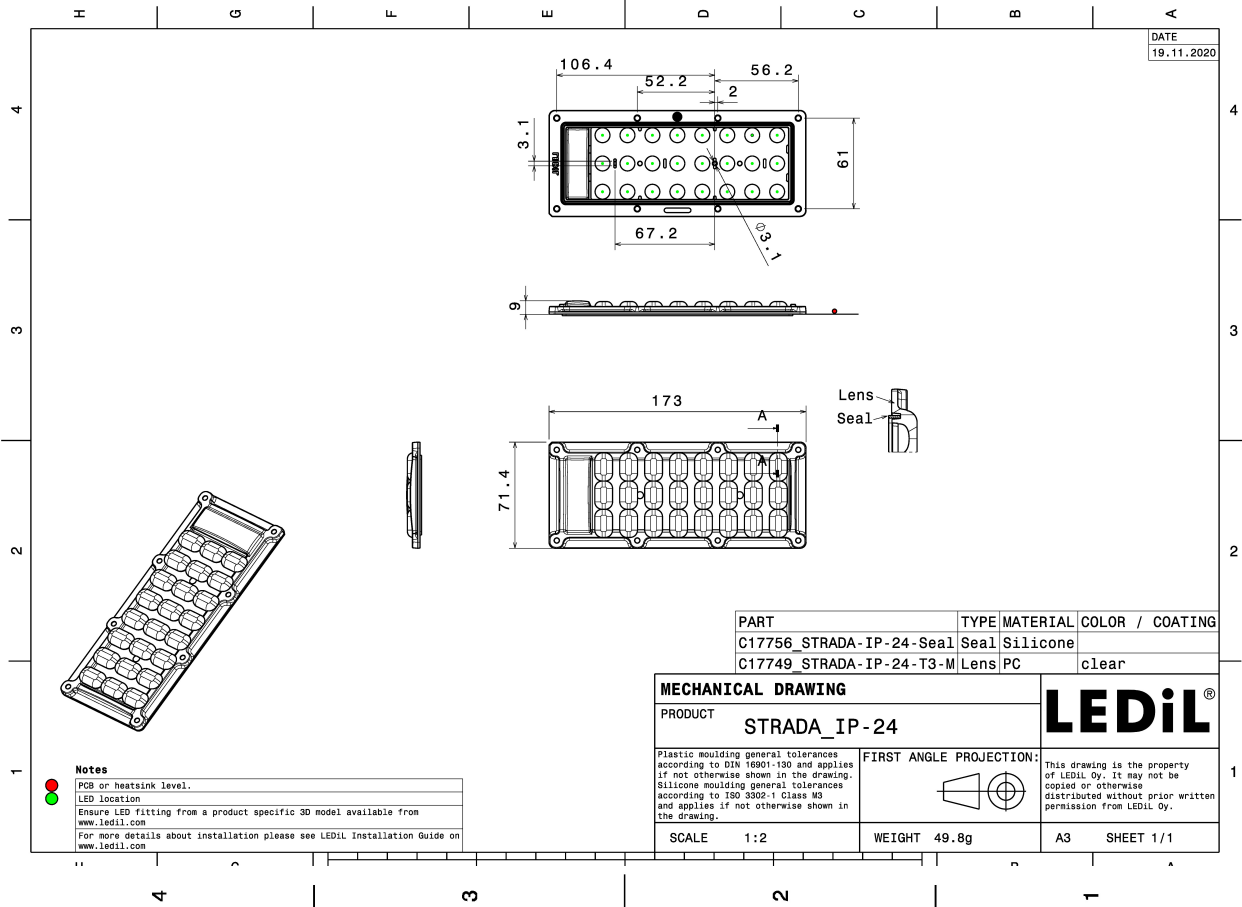


MATERIALS:

Component	Type	Material	Colour	Finish	Length (mm)
STRADA-IP-24-T3-M-PC	Multi-lens	PC	clear		
STRADA-IP-24-SEAL	Seal	Silicone	white		

ORDERING INFORMATION:

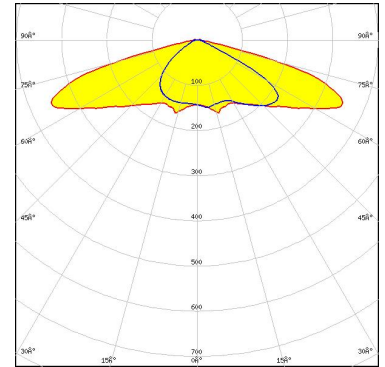
Component	Qty in box	MOQ	MPQ	Box weight (kg)
CS17758_STRADA-IP-24-T3-M-PC	120	120	40	7.0
» Box size: 476 x 273 x 247 mm				



OPTICAL RESULTS (MEASURED):



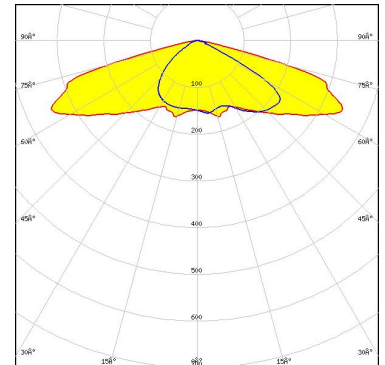
LED LIGHT ENGINE STRADA-IP 24 LEDs 147.4 x 46.2 x 1.5
 FWHM / FWTM Asymmetric
 Efficiency 84 %
 Peak intensity 0.5 cd/lm
 LEDs/each optic 1
 Light colour/type White
 Required components:



Light distribution files



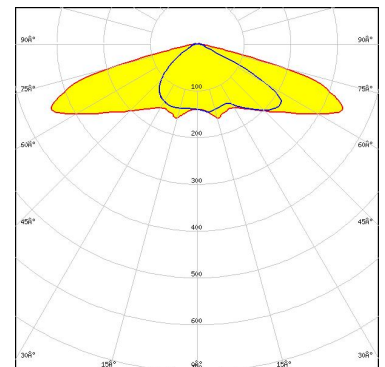
LED PL-BRICK HP 3x8 IP-24
 FWHM / FWTM Asymmetric
 Efficiency 85 %
 Peak intensity 0.5 cd/lm
 LEDs/each optic 1
 Light colour/type White
 Required components:



Light distribution files



LED LUXEON 5050 Square LES
 FWHM / FWTM Asymmetric
 Efficiency 83 %
 Peak intensity 0.6 cd/lm
 LEDs/each optic 1
 Light colour/type White
 Required components:

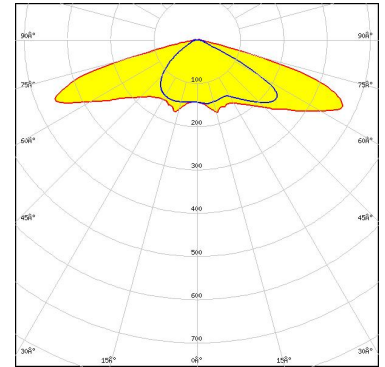


Light distribution files

OPTICAL RESULTS (MEASURED):



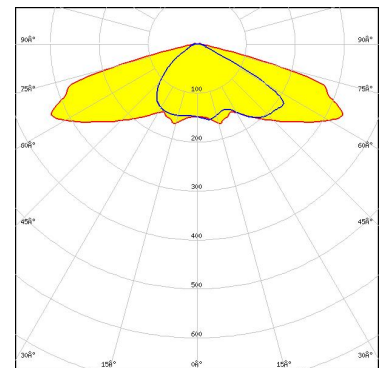
LED LUXEON XR-5050 HE (L225-xxxx024MLU010)
 FWHM / FWTM Asymmetric
 Efficiency 85 %
 Peak intensity 0.6 cd/lm
 LEDs/each optic 1
 Light colour/type White
 Required components:



Light distribution files



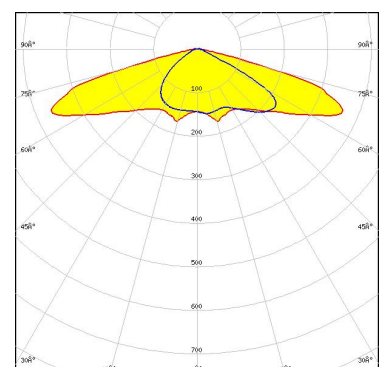
LED Duris S8
 FWHM / FWTM Asymmetric
 Efficiency 84 %
 Peak intensity 0.5 cd/lm
 LEDs/each optic 1
 Light colour/type White
 Required components:



Light distribution files



LED HiLOM RM24 ZP (LH502D)
 FWHM / FWTM Asymmetric
 Efficiency 85 %
 Peak intensity 0.6 cd/lm
 LEDs/each optic 1
 Light colour/type White
 Required components:

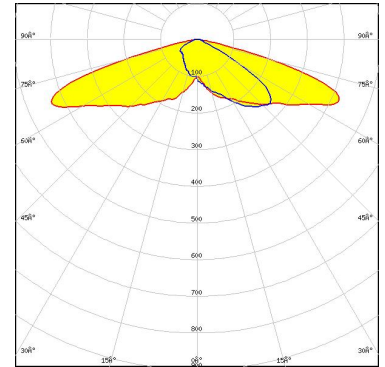


Light distribution files

OPTICAL RESULTS (SIMULATED):



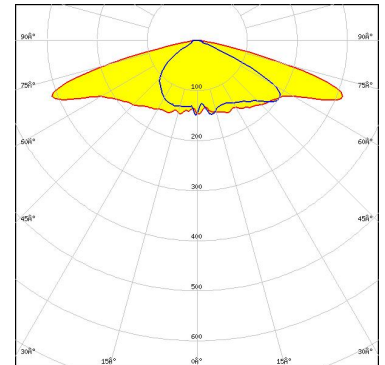
LED: Bridgelux SMD 5050
 FWHM / FWTM: Asymmetric
 Efficiency: 88 %
 Peak intensity: 0.6 cd/lm
 LEDs/each optic: 1
 Light colour/type: White
 Required components:



Light distribution files



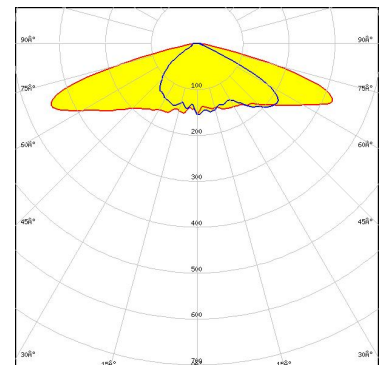
LED: J Series 5050B 30V K Class
 FWHM / FWTM: Asymmetric
 Efficiency: 76 %
 Peak intensity: 0.5 cd/lm
 LEDs/each optic: 1
 Light colour/type: White
 Required components:



Light distribution files



LED: J Series 5050B 6V K Class
 FWHM / FWTM: Asymmetric
 Efficiency: 81 %
 Peak intensity: 0.5 cd/lm
 LEDs/each optic: 1
 Light colour/type: White
 Required components:

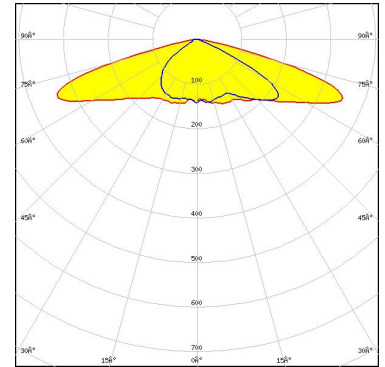


Light distribution files

OPTICAL RESULTS (SIMULATED):



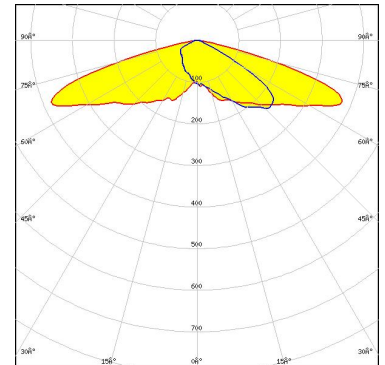
LED J Series 5050C 6V E Class
 FWHM / FWTM Asymmetric
 Efficiency 81 %
 Peak intensity 0.5 cd/lm
 LEDs/each optic 1
 Light colour/type White
 Required components:



Light distribution files



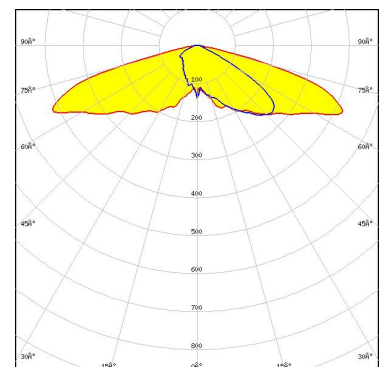
LED NFMW48xA
 FWHM / FWTM Asymmetric
 Efficiency 79 %
 Peak intensity 0.5 cd/lm
 LEDs/each optic 1
 Light colour/type White
 Required components:



Light distribution files



LED OSCONIQ S 5050 (Q9LR32)
 FWHM / FWTM Asymmetric
 Efficiency 89 %
 Peak intensity 0.6 cd/lm
 LEDs/each optic 1
 Light colour/type White
 Required components:

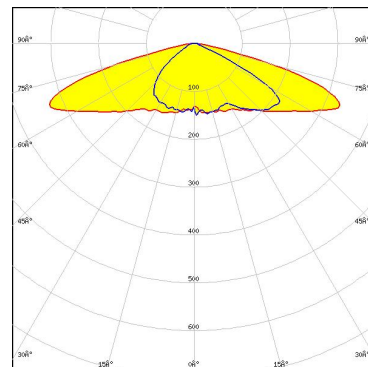


Light distribution files

OPTICAL RESULTS (SIMULATED):

SAMSUNG

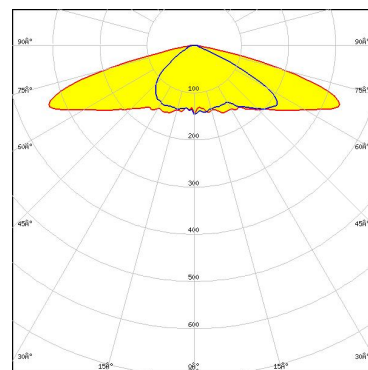
LED LH502C
 FWHM / FWTM Asymmetric
 Efficiency 82 %
 Peak intensity 0.5 cd/lm
 LEDs/each optic 1
 Light colour/type White
 Required components:



Light distribution files

SAMSUNG

LED LH502D
 FWHM / FWTM Asymmetric
 Efficiency 81 %
 Peak intensity 0.5 cd/lm
 LEDs/each optic 1
 Light colour/type White
 Required components:



Light distribution files

GENERAL INFORMATION:

NOTE: The typical beam angle will be changed by different color, chip size and chip position tolerance. The typical total beam angle is the full angle measured where the luminous intensity is half of the peak value.

MATERIALS:

As part of our continuous research and improvement processes, and to ensure the best possible quality and availability of our products, LEDiL reserves the right to change material grades without notice.

PRODUCT DATA USER AGREEMENT AND DISCLAIMER:

The measured data in the provided downloadable LEDiL Product Datasheets and Mechanical 2D-Drawings is rounded and provided as reference for planning. LEDiL Oy's optical specifications have been verified by conducting performance testing of the products in accordance with the company's quality system. The reported data are averaged results of multiple measurements with typical variation. LEDiL Oy reserves the right to without prior notification make changes and improvements to its products.

LEDiL Oy assumes neither warranty, nor guarantee nor any other liability of any kind for the contents and correctness of the provided data. The provided data has been generated with highest diligence but the provided data may in reality not represent the complete possible variation range of all intrinsic parameters. Therefore, in certain cases a deviation from the provided data could occur.

LEDiL Oy reserves the right to undertake technical changes of its products without further notification which could lead to changes in the provided data. LEDiL Oy assumes no liability of any kind for the possible deviation from any provided data or any other damage resulting from the usage of the provided data.

The user agrees to this disclaimer and user agreement with the download or usage of the provided files.

LEDiL Oy

Joensuunkatu 7
FI-24100 SALO
Finland

LEDiL Inc.

228 West Page Street
Suite D
Sycamore IL 60178
USA

Ledil Optics Technology (Shenzhen) Co., Ltd.

405 , Block B
Casic Motor Building
Shenzhen 518057
P.R.CHINA

Local sales and technical support

[www.ledil.com/
where_to_buy](http://www.ledil.com/where_to_buy)

Shipping locations

Poznan, Poland
Hong Kong, China

Distribution Partners

[www.ledil.com/
where_to_buy](http://www.ledil.com/where_to_buy)